



# JBL Soundbars — Enhanced audio for the classroom

Many of the latest touchscreen displays provide stunning visuals, but those with built-in speakers often lack the power to fill an entire classroom with high quality audio.

The JBL Bar Studio and Bar 2.1 compact soundbars provides stellar sound for your display screen – enhancing audio and dialogue of all lesson and presentation material. The Bar Studio’s slim, incomparable design and extreme of use make it the perfect partner for any classroom, and the JBL Surround Sound and double bass ports turns the Bar Studio sound into real cinema sound.

JBL Bar 2.1 features Dolby® Digital, JBL Surround Sound with a wireless 6.5” subwoofer to

provide both a balanced sound and room filling deep bass for powerful music reproduction and other programme material.

JBL soundbars include Bluetooth connectivity so that you can stream your music or programme material wirelessly, and both are easy to set up with just one single HDMI connection. You can also control the JBL Soundbars with an existing TV remote control.



## JBL Studio 2.0 Soundbar with Bluetooth

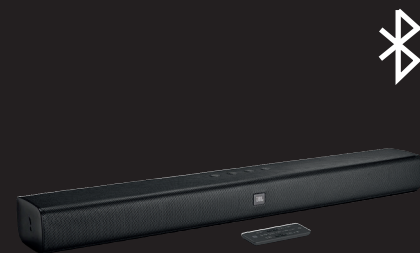
JBL Surround Sound and double bass ports turn standard TV sound into real cinema sound. The JBL Bar Studio includes Bluetooth connectivity teachers that you can stream presentations wireless to the class without additional cables.

## JBL Bar 2.1 300W Soundbar & Wireless Subwoofer

Designed with a slim profile, the full-featured, easy-to-use JBL Bar 2.1 is packed with Bluetooth, an HDMI input and HDMI ARC. Combines 300W system power together with Dolby Digital, JBL Surround Sound and a wireless subwoofer.

## JBL Bar 3.1 450W Soundbar & Wireless Subwoofer

Featuring 450W of total system power, a dedicated centre channel and a 10” wireless subwoofer, the JBL Bar 3.1 soundbar delivers an epic cinematic experience without compromising on clear dialogue.



ORDER: AVJBL02



ORDER: JBL350



ORDER: JBL362

Talk to our AV team on 020 8296 7399  
[www.northamber.com](http://www.northamber.com)

